

UNLIMITED LETTERS

create your own unique hand lettering styles

By altering just four basic elements, and adding a few variations,
learn how to transform your hand lettering
from ordinary to...

OUTSTANDING!

from plain to...

PERFECTION!

Great for school projects!
Liven up your chalkboards!
Perfect for making your menu boards POP!!
Enhance your greeting cards!
The list is as endless as your choice of letter styles!

AGE & SKILL LEVEL:

YOUTH TO ADULT

If you can print legibly and follow direction, you are good to go!

GLOSSARY

You might come across some words in this workbook that you are not familiar with. Below, I will try to explain them briefly.

Stem; The main upright stroke of the letter.

Stroke; The secondary upright stroke of the letter, often slanted.

Bowl; The *round* part of the letter.

Crossbar; The bar that crosses the middle of a letter like **A** or **H**.

Serif; The decorative *ends* on a letter as in  **B**

Ascender; The stroke of a lower case letter that goes above the waistline...like **d** or **k**

Descender; The stroke of a lower case letter that goes below the waistline...like **g** or **j**

Baseline; The line that your letters sit on.

Waistline; The line that marks the top of the lower case letters, or where the crossbar goes, or the center of an upper case letter..

Ascender Line; The line where you stop the ascender strokes.

Descender Line; The line where you stop the descender strokes.



In this workbook I am going to show you how you can turn plain ordinary (boring) printing into amazing, awesome hand lettering. By the end, you will have learned so many variations, you will lose track of counting!

WHO IS THIS FOR?

Anyone who has sent a greeting card, worked on a school project, made a poster, or written a note. It's for anyone who writes on a chalkboard, keeps a journal, or enhances their artwork with text. It's for **kids** and **adults** alike who love to letter and want to learn more!

WHAT WILL YOU LEARN?

We are going to focus on five different areas we can alter.

1. Overall SHAPE
2. Altering the WAISTLINE (not yours, the letter's)
3. SERIFS (don't know what they are?...you will)
4. CROSSBARS
5. ODD VARIATIONS
6. CONSISTANCY...to give your hand lettering a uniform, professional look, use the same style of each letter in any given word or phrase. Two a's in the same word should be the same.

3.

Let's start with a simple exercise

On the line below, print a word in capital letters.
Any word, it doesn't matter what word.

4.

LETTER SHAPE

ELEMENT # 1

The first element we are going to alter is the overall SHAPE of the letters. In the first example, the letters are based on a square. Every letter will fit in a square. There are a few exceptions though because some letters take more space than others. For example, an M takes up more room than an I

A B C D E F G H I J K L M N
O P Q R S T U V W X Y Z

M I S T



When each letter is given an equal square it can mess up the spacing. The word on the right has been adjusted

M I S T ✓

A B C D E F G H I J K L M N O P Q R S T U V W X Y Z

write a word with tall thin letters

A B C D E F G
H I J K L M N
O P Q R S T U
V W X Y Z

write a word with wide letters

Practice more on the next page

5.

6.

LET'S TRY RAISING THE (cross) BAR

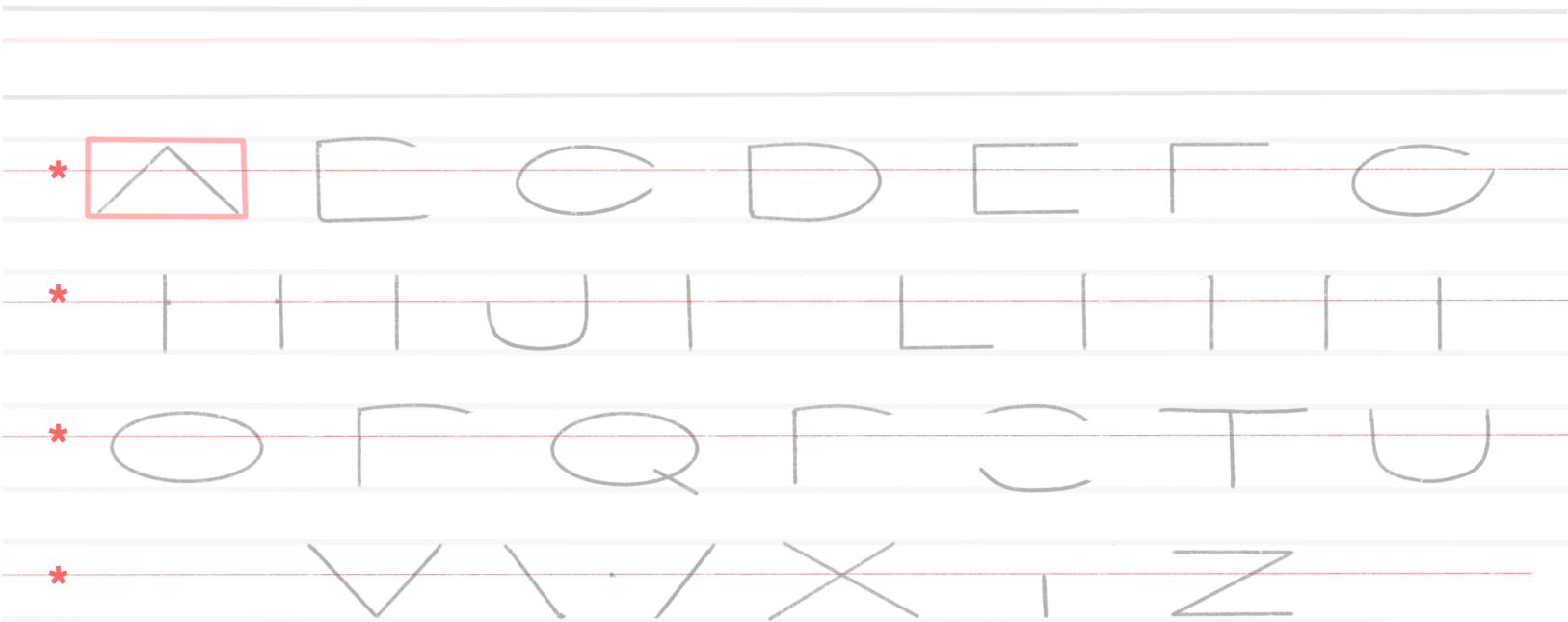
Using a pencil or marker, trace the letters and place a crossbar on the new raised red line. (This line is called the waistline)



Write a word using the square font with the high crossbar



Write a word using the skinny style with the high crossbar



Write a word using the wide style with the high crossbar

7.

NOW LET'S LOWER THE (cross) BAR

A B C D E F G H I J K L M N
O P Q R S T U V W X Y Z

Write any word using the square style and the low crossbar

A B C D E F G H I J K L M N O P Q R S T U V W X Y Z

Write any word using the tall thin tyle and the low crossbar

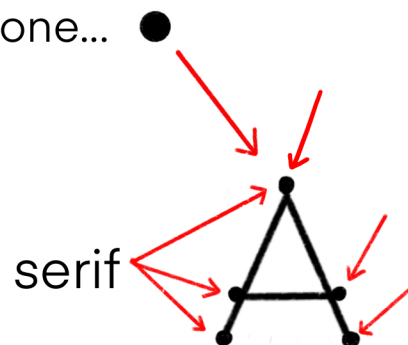
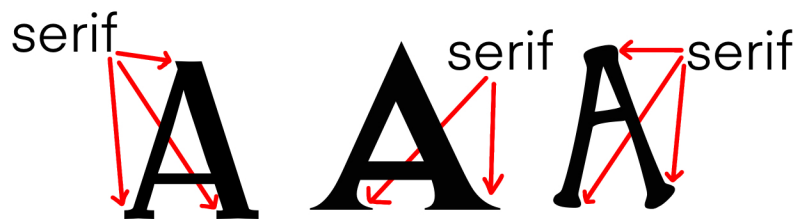
Remember that the 'A's crossbar is alwas a little lower

A B C D E F G
H I J K L M N
O P Q R S T U
V W X Y Z

Write any word using the wide style and the low crossbar

So about those SERIFS...

Serifs are decorative strokes added to the end of a larger stroke. Let's try this one... ●



A B C D E F G H I J K L M N
O P Q R S T U V W X Y Z

A B C D E F G H I J K L M N O P Q R S T U V W X Y Z

A B C D E F G
H I J K L M N
O P Q R S T U
V W X Y Z

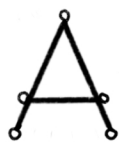
Have you been keeping track of the # of combo's? Total so far ____

9.

TRY SOME WORDS OR PHRASES

A series of horizontal lines for writing, with red dots on the left margin.

Let's try a few more...



(Awe...that's so cute!)

Add these new serifs to the alphabets below, then try a few new words!

A B C D E F G H I J K L M N

O P Q R S T U V W X Y Z

A B C D E F G H I J K L M N O P Q R S T U V W X Y Z

A B C D E F G

H I J K L M N

O P Q R S T U

V W X Y Z

11.

TRY SOME WORDS OR PHRASES

A series of horizontal lines for writing, with red dots on the left side of each line.

12.

NOW LET'S HAVE A LOOK AT ALTERING THE SHAPE OF THE CROSSBAR

On this page, let's experiment with this style:



A B C D E F G H I J K L M N

O P Q R S T U V W X Y Z

In this space write a word or two using the new crossbar

A I C D E F G H I J K L I N O P Q R S T U V W X Y Z

In this space write a word or two using the new crossbar

A I C D E F G

H I J K L

O P Q R S T U

V W X Y Z

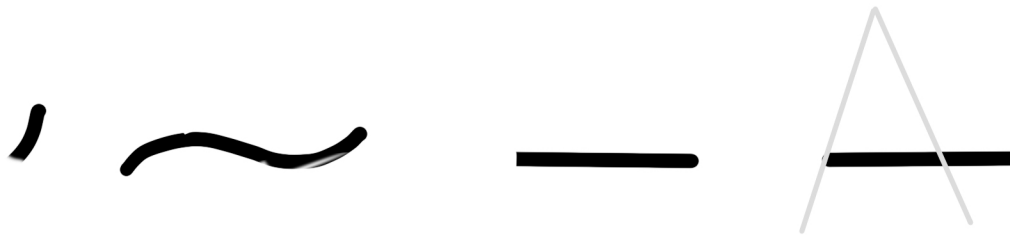
In this space write a word or two using the new crossbar

TRY SOME WORDS OR PHRASES

Handwriting practice lines with red dots on the left margin.

14.

LET'S TRY SOME DIFFERENT STYLES!



A B C D E F G H I J K L M N
O P Q R S T U V W X Y Z

Practice a few words:

A B C D E F G H I J K L M N O P Q R S T U V W X Y Z

Practice a few words:

A B C D E F G H I J K L M N
O P Q R S T U V W X Y Z

Practice a few words:

15.

TRY SOME WORDS OR PHRASES

Handwriting practice lines consisting of multiple horizontal grey lines. On the left side of each line, there is a small red dot, serving as a guide for letter height and placement.

#5 VARIATIONS

There are as many variations as your mind can dream up, but I am going to talk about a few of my favourites.

Not every letter can, or should, be altered. Use variations sparingly to make them most effective, and above all, use them consistently throughout your project. For example, if you have two 'N's in your project, they should be the same. Ok, let's go!

Here is a list of letters I like to alter: A, F, H, K, L, M, N, O, Q, R, S, T, V, X, Y (but not all at once)

AND or AND

FULL or FULL

HOT or HOT

KIT or KIT

LEG or LEG

MAT or MAT

NOT or NOT

LOT or LOT

QUIT or QUIT

RAT or RAT

SIT or SiT

TALL or TALL

VEG or VEG

AXE or AXE

YES or YES

TRY SOME WORDS OR PHRASES

Handwriting practice lines with red dots for tracing.

**HERE ARE SOME VARIATIONS FOR YOU
TO TRY ON THE NEXT PAGE!!**

A B C D E F G H I J K L M N
O P Q R S T U V W X Y Z

A B C D E F G H I J K L M N O P Q R S T U V W X Y Z

A B C D E F G
H I J K L M N
O P Q R S T U
V W X Y Z

TRY SOME WORDS OR PHRASES

Handwriting practice lines consisting of multiple horizontal grey lines with red dots on the left margin for alignment.

I MADE A WHOLE NEW HAND LETTERED ALPHABET!

I used: 1. skinny shape 2. high crossbar 3. dot serif 4. Crossbar extended to the left

A B C D E F G H I J K L M N O P Q R S T U V W X Y Z

I am going to write a short quote and I will add the variations now. I do it this way because not all the variations work well together. Knowing what works well together is just practice!

WAKE UP AND BE AWESOME!

Now experiment making your own customized alphabet...remember the: SHAPE, HEIGHT OF WAISTLINE, SERIF and SHAPE OF CROSSBAR are what you alter first. When you start to create your finished piece, look at the variations.

21.

CREATE SOME NEW ALPHABETS

Handwriting practice lines with red dots for tracing.

22.

CREATE SOME NEW ALPHABETS

A blank sheet of lined paper with horizontal gray lines and red dots on the left margin, intended for creating new alphabets.

CREATE SOME NEW ALPHABETS

Handwriting practice lines with red dots for tracing.

FROM BORING TO UNIQUE!

BORING! → LAUGH EVERY DAY

FUN!



“LAUGH EVERY DAY”

BORING! → YOU ARE MY SUNSHINE...

CREATIVE!



“YOU ARE MY SUNSHINE...”

BORING! → BELIEVE

UNIQUE!



BELIEVE BELIEVE

Remember when we started and you printed that word?

On the line below, I want you to print it again
using the things that you have practised.

(Did you try to keep track of the number of combinations?
I lost track at around 45 on the serif page!)

OOOPS!! WE FORGOT THE LOWER CASE!

But the good news is...you have the skills to figure it out on your own!
I will give you a start, but just follow the same process that we used for the
Upper Case letters.

ascender

waist

baseline

descender

a b c d e f g h i

ascender

waist

baseline

descender

a b c d

ascender

waist

baseline

descender

ascender

waist

baseline

descender

a b c d

ascender

waist

baseline

descender

a b c d e

ascender

waist

baseline

descender

AND NOW FOR SOME VARIATIONS...

ascender

waist

baseline

descender

create imagine laugh believe

ascender

waist

baseline

descender

ascender

waist

baseline

descender

ascender

waist

baseline

descender

create imagine laugh

ascender

waist

baseline

descender

ascender

waist

baseline

descender

CHALK LETTERING TIPS AND TRICKS

This is not a complete chalk lettering workbook (though I am working on one of those) but the techniques that you have just learned can be applied to chalk lettering nicely.

While I won't go into a ton of detail, I will give you a few tips on working with chalkboards.

1. Your chalkboard should be 'seasoned' if you are using it for the first time. This prevents 'ghosting' which means your work won't erase completely.

To season the board....rub chalk heavily all over the board. Rub with a cloth to work the chalk into the board, then clean as much as possible. It doesn't hurt to repeat this.

2. You can sharpen chalk with a regular pencil sharpener and I recommend this.

3. Use skinny painters tape to give yourself a straight line.

4. Block your piece out VERY lightly.

5. Put a piece of paper under your 'writing' hand to keep your hand from smudging the chalk.

6. To space correctly, count out your letters and start with the middle one. (Adjusting things accordingly for capitals, and wide or narrow letters)

THANK YOU AND HAVE FUN!